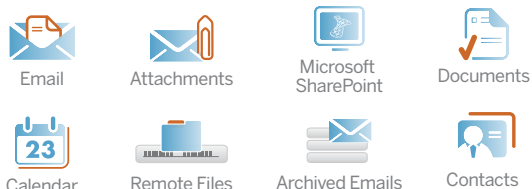


X1 Search

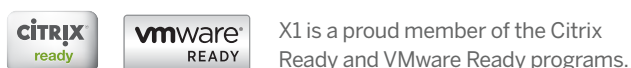
Find Emails, Files, and SharePoint Data on Standard or Virtual Desktops

X1 Search™, a next generation productivity application for both standard and virtual desktops, unifies search across emails, files, and SharePoint data.

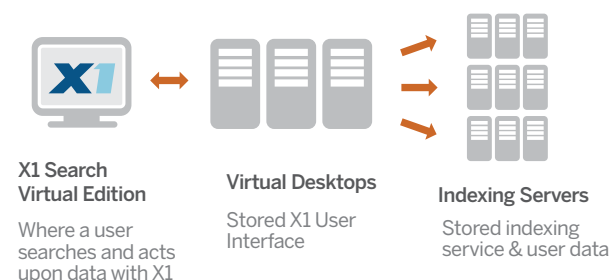


X1's award winning interface, including fast-as-you-type search and post-search actions, was specifically architected to retrieve results in the way a business professional recalls information. More often than not, you may forget file names or whether a critical document is stored on a local drive, in SharePoint, or on a Network File Share, but, if you remember the email contents or keywords throughout the file, X1 can retrieve your result in just a few keystrokes.

X1 Search provides the flexibility necessary for a globalized workforce. Whether working on your office desktop, or logging onto a virtual desktop from a remote location, X1 Search will find and let you act on critical documents regardless of where you or your data reside.



Now available for Virtual Desktop Infrastructures (VDI)



Benefits

Comprehensive Email Search

Deep Outlook and Symantec® Enterprise Vault integration empowers professionals to search across multiple Vaults, Outlook email, attachments, Outlook Calendars, and contacts lists.

Cloud & Hybrid Cloud Search

Search cloud repositories like Box and OneDrive alongside email, files, and SharePoint content, reaping the benefits of a single-pane-of-glass view for business content.

SharePoint Search

Seamlessly integrate SharePoint into your workflow with native preview of document libraries and lists as well as SharePoint specific post-search actions such as check-in and check-out.

Federated Search

X1 unifies search results, enabling you to preview and act upon information whether stored in an Outlook email, a PDF saved to the network, or a SharePoint site.

Search on the Go

Take X1 desktop search with you on your mobile devices with X1 Search Mobile. Search your email, desktop files, and more – directly from your mobile device. (Requires additional purchase)

User-centric Interface

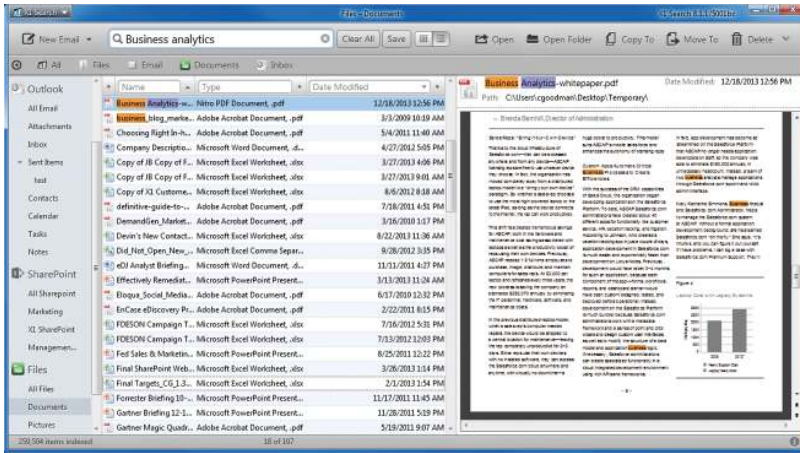
Fast-as-you-type search, 50+ refine columns, full fidelity preview, and a catalog of post-search actions retrieve results in the way a business professional recalls information.

X1 now offers a virtual edition of Search, enabling a better VDI experience by providing users the comfortable interface and robust search of traditional X1, with a back-end architecture optimized for virtual desktops.

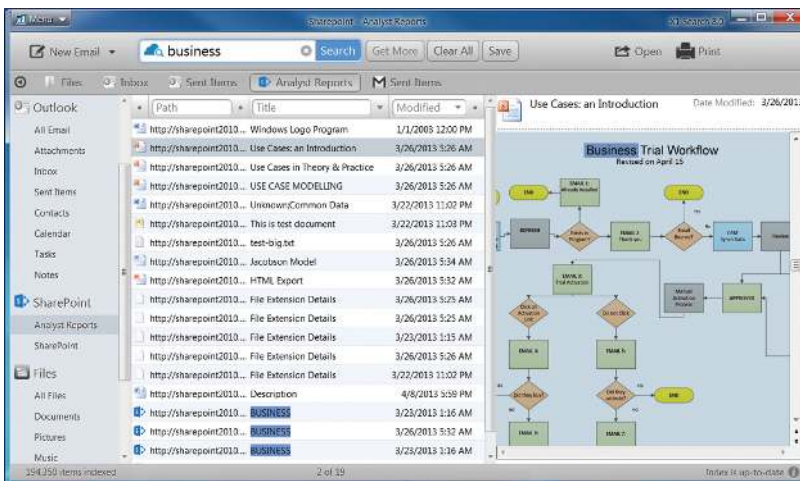
VDI-friendly architecture features two components:

1. "Thin" X1 client interface residing on virtual desktop servers, built for a low impact and resource efficient footprint
2. X1 index and processes offloaded to other computers (the "Indexing Servers")
3. Central storage
4. Secure communication layer

Full fidelity preview



Search term hit highlighting in SharePoint



Key advantages

- Unified search across emails, desktop files, remote file shares, SharePoint data and more
- Compatible with both standard and virtual desktops
- Enables enterprise search from mobile devices
- Patented fast-as-you-type search with Boolean, proximity and keyword searching
- 50+ refine columns to drill down to your results faster
- Preview over 500+ file types in native format
- Post-Search Actions—open, edit, email, save and more—without leaving X1
- Ability to save custom searches and share with other X1 users

About X1

X1 offers next generation desktop and enterprise search solutions specifically designed for professionals who need to quickly find and act on critical business data. The same platform allows for IT and legal professionals to perform powerful searches of their organization's data for compliance, eDiscovery and data migrations. X1 was founded by Idealab and is powered by award winning and patented¹ X1 Search Technology for business professionals, which has over 600,000 users worldwide.

Minimum hardware requirements

- OS:** Windows 7, Windows 8, Windows 10 (32 bit or 64 bit)
- CPU:** 1 GHz minimum, 32 bit (x86) or 64 bit (x64)
- Memory:** 1 GB RAM for 32-bit or 2 GB RAM for 64-bit*
- Disk:** 1 GB free hard disk space*
- Software:** Microsoft .NET Framework 4.5.1 extended

* Actual memory and disk space varies depending on the amount of content indexed.

Supported email applications

Outlook 2007, 2010, 2013, 2016, Gmail, Yahoo!, AOL, and other IMAP based email accounts. X1 Search supports Office/Outlook installs in both 32-bit and 64-bit modes.

Supported email archives

Symantec Enterprise Vault versions 9, 10, and 11

Supported SharePoint installations

SharePoint 2007, SharePoint 2010, SharePoint 2013, SharePoint 365

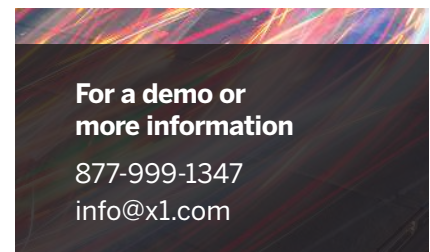
Supported remote file shares

Box, OneDrive, OneDrive for Business (O365), and OneDrive for Business (SharePoint 2013)

X1 Search is available for sale at \$96 per license, including the first year of annual support. Volume discounts apply for enterprise purchases in quantities of 500 or more units.

X1 Search Virtual Edition is available for volume purchases only (not for individual sale).

Visit www.X1.com for a 14 day trial.



For a demo or more information

877-999-1347
info@x1.com

¹ U.S. Patents No. 7,370,035, 7,424,510, 7,496,559, 7,945,914, 8,019,741, 8,498,977, 8,856,093, 9,633,139, 9,659,058, and 9,880,983