

X1 Social Discovery

Social Media and Internet-Based Data Collection



X1 Social Discovery™ is the industry-leading solution for law enforcement, law firms or legal consultants who need to collect and search data from social networks and the internet.

Unique in the Industry

X1 Social Discovery aggregates comprehensive social media content and internet-based data into a single user interface. Other competitive solutions are narrowly focused upon a single social network – often having a separate application for each – and have no ability to aggregate all collected data into a single interface. X1 Social Discovery allows all collected data to be analyzed in one place and supports filtering across both metadata and content from social networks, websites and webmail.

X1 Social Discovery is designed to address social media content from the leading social media networking sites, websites and email including:

- Web pages & websites
- Facebook
- Twitter
- Instagram
- YouTube
- Tumblr
- Gmail
- YahooMail
- Outlook.com
- AOL Mail
- Internet Message Access Protocol (IMAP)

Also unique in the industry, X1 Social Discovery collects social media metadata in a legally defensible manner, preserves the chain of custody, and has the ability to collect up to hundreds of metadata fields directly from supported social networks. X1 Social Discovery uses the same court-accepted mathematical algorithm (MD5) used by digital forensics and eDiscovery professionals to validate and authenticate their data.

About X1

X1 creates exceptional solutions for people and organizations that need to find information, whether on individual desktops, company networks or social media at the fastest speeds in the industry. Powered by patented and award winning technology, X1 supports more than 600 enterprise customers and more than 600,000 active commercial and government users.

Key Advantages

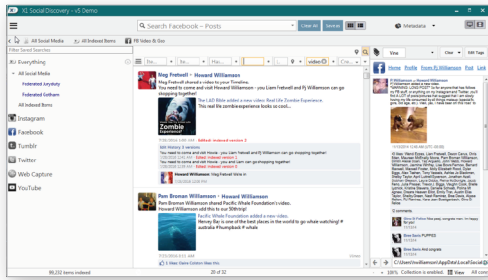
- Collect from multiple social media platforms simultaneously
- Preserves critical metadata
- Single user interface designed specifically for social media data review
- X1's patented "Fast-As-You-Type" technology
- Export to multiple formats
- Court-validated MD5 authentication
- Pending patent for web page authentication

"X1 Social Discovery – a desktop software for Windows that every litigator should include in their technical belt. A single license of X1 Social Discovery is affordable and necessary for the smallest domestic issue all the way up to the largest civil litigation matter."

Brett Burney
E-Discovery Expert
Burney Consultants LLC

Our Customers





Instantly preview content from individual items ingested, including any referenced link

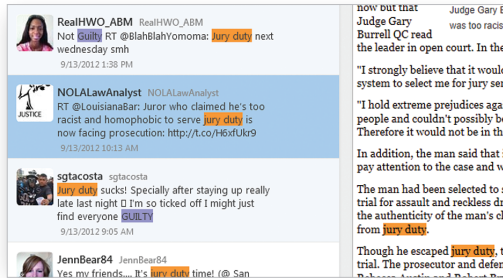
Collection

Data is collected and indexed from social media streams, linked content and websites through APIs and direct web navigation. X1 Social Discovery aggregates data from these multiple sources in real time, in a highly scalable and case-centric manner.

Automated Email Alerts

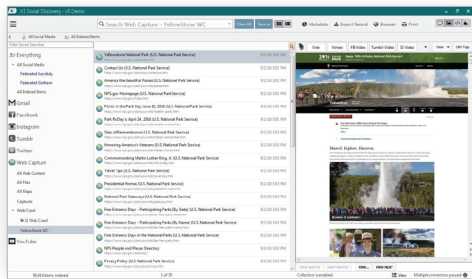
Receive email alerts when new key evidence is collected as you define in your saved search, for social media and website collections. Each saved search can be set up to alert different sets of recipients. Automated alerts can be set in digest form on a daily, weekly or "as it happens" schedule, saving investigators critical man hours. This feature is available on select scanners.

Search against metadata fields and content of referenced links and view highlighted matches instantly while filtering results



Authentication

MD5 hash values of individual items are calculated upon capture and maintained through export. Automated logging and reports are generated. Key metadata unique to social media and web streams are captured through deep integration with various social media platforms.

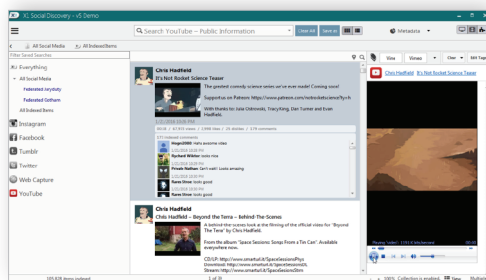


Conduct single-page web capture and multiple-page web crawl and review the data alongside the rest of the social media content

Search

Perform broad, unified searches across multiple accounts, social media streams and websites from a single interface. Linked content is automatically indexed and searched and the results are aggregated for sorting, tagging and export consistent with standard eDiscovery or investigative workflow.

Capture entire YouTube video content and the metadata associated with a video, playlist or channel



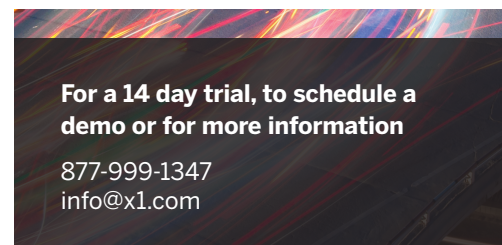
Export

Data is maintained in a searchable native format from collection through export. Choose from multiple export formats including Concordance, CSV, PDF, and HTML. Deliver collected email in PST format while maintaining hierarchical structure.

X1 Social Discovery training and certification is available through Digital Shield, a recognized leader in computer forensics training and accreditation.

System Requirements

- Operating System: Windows 7, 8.1, 10 (64-bit only)
- CPU: 1.8 GHz (minimum)
- Memory: 8 GB RAM
- Disk – Install Space: 200 MB
- Disk – Case Storage: 100 GB (minimum), 1TB External Hard Drive (recommended)
- Software: Internet Explorer 11, Google Chrome, Microsoft.NET framework 4.5.2 or later, Windows Media Player



¹ U.S. Patents No. 7,370,035, 7,424,510, 7,496,559, 7,945,914, 8,019,741, 8,498,977, 8,856,093, 9,633,139, 9,659,058, and 9,880,983